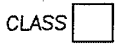


SOLID    SEMI-HOLLOW    HOLLOW



CLASS

TITLE

**CMTM / CMTF**

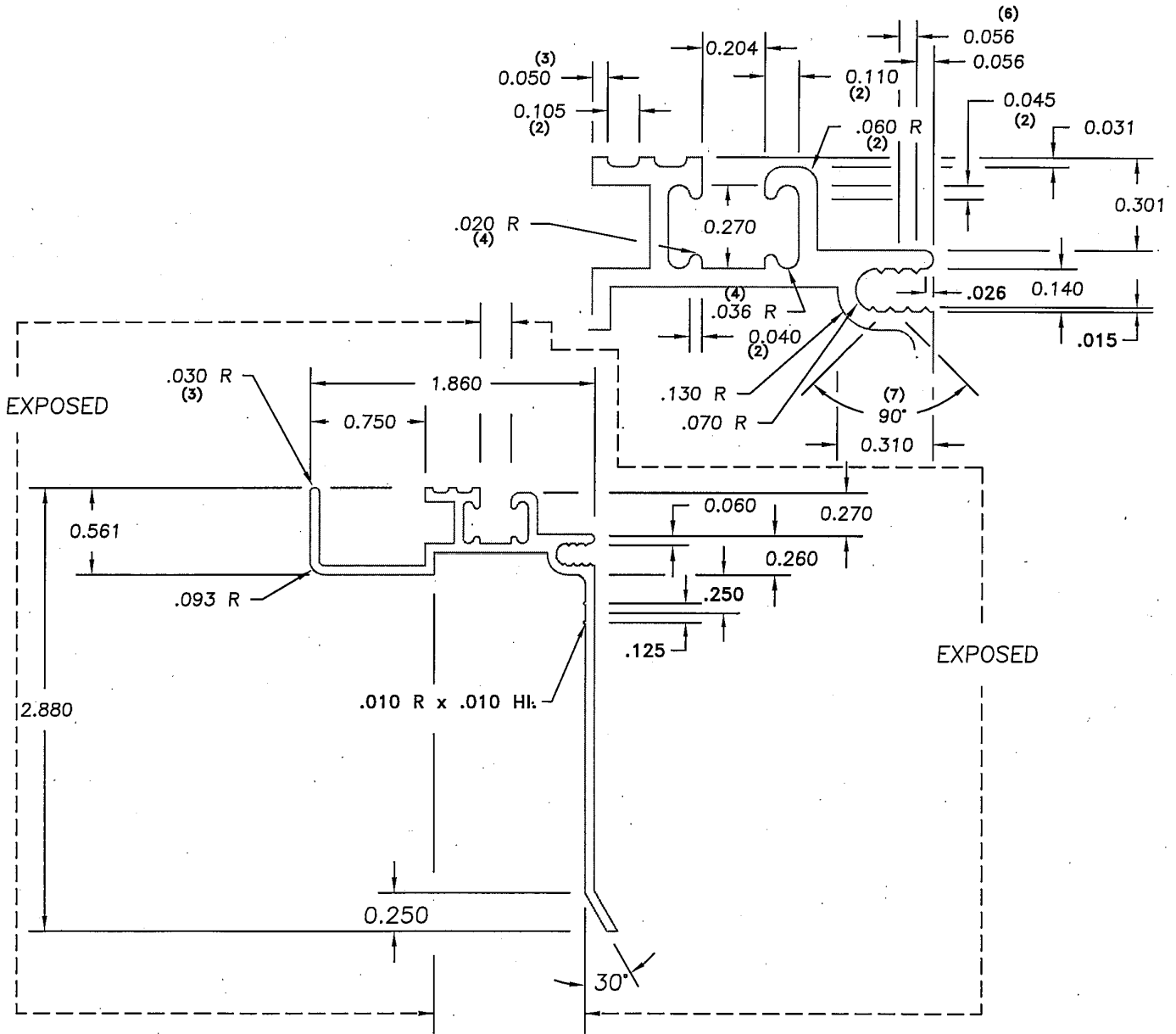
DIE No.

CUSTOMER PT. No.

CUTTING LENGTH

ALLOY **6063** TEMPER **T5** CIRCLE SIZE **3.6** P/P POCKET SIZE **"A-A"**

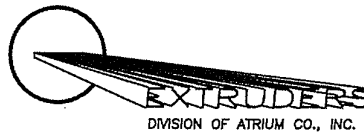
ALL TOLERANCES -- ALUMINUM ASSOCIATION STANDARD -- UNLESS SPECIFIED OTHERWISE



.060 TYPICAL WALL THICKNESS EXCEPT AS NOTED

BREAK SHARP CORNERS .015 R. EXCEPT AS NOTED

EST. AREA in <sup>2</sup>	.397	EST. TOTAL PER.	12.873
EST. AREA cm <sup>2</sup>		EST. OUTSIDE PER.	
EST. WT. PER FT.	.476	CODE	FACTOR 27
EST. Kg. PER M.		PRESS LOCATION	



Die Size		Backer Size	
DATE	No.	REVISIONS	BY

CUSTOMER:	<b>US Building Products</b>		
CITY	<b>Lee's Summit, MO</b>		
DRAWN BY:	tkd	DATE:	31 July 89
SCALE:	FULL	DWG. No.	D-01049